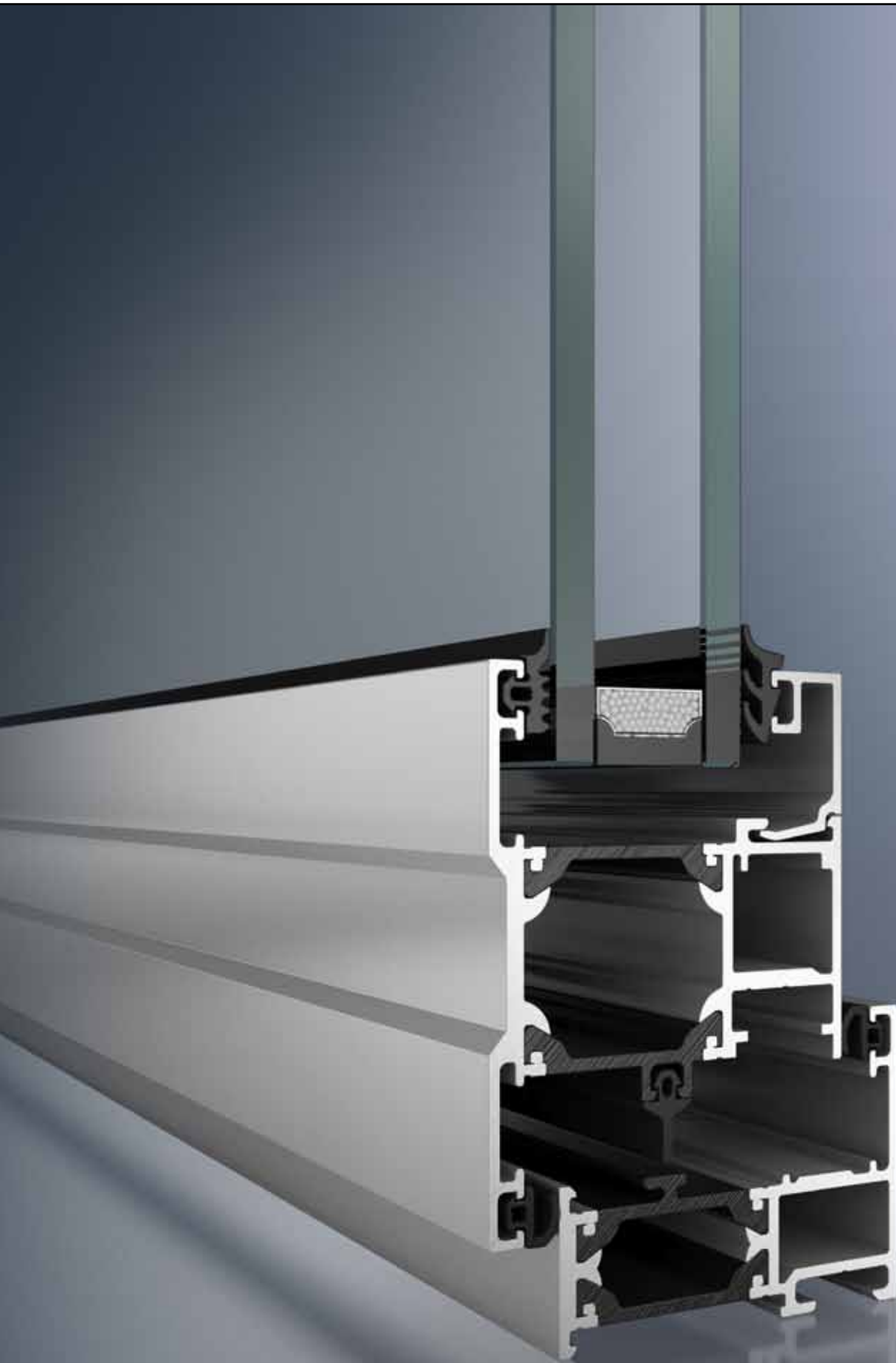


# Schueco AWS 55 CL Outward Opening Window



Green Technology for the Blue Planet  
Clean Energy from Solar and Windows

**SCHÜCO**



# Schueco AWS 55 CL

## Outward Opening Window

The Schueco AWS 55 CL aluminium casement window system is designed to meet the environmental and cost demands of today's sustainable buildings. Suitable for light commercial, education, healthcare and residential applications, it provides an ideal solution especially when budgets are an important consideration.

### Features and benefits:

- Higher thermal insulation achieved with unique convection barrier
- Suitable for BREEAM projects
- Meets requirements of Document L 2010 for new-build and replacement use
- Slim sightlines allow more daylight into a building
- Comprehensive range of thermally insulated profiles for greater design freedom
- Square or chamfered glazing beads with security option when used externally
- Choice of basic hardware or twin-cam security locking
- Tested to BS 7950 with Secured by Design accreditation

- Options include folding openers and 100mm safety limit stay
- Can be installed into standard openings or integrated into Schueco façades
- Single or dual colour frames
- Schueco crimped cleat and adhesive bonding corner joint technology
- Available with egress/easy-clean side-hung friction hinges



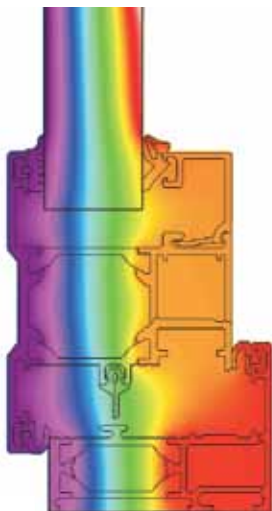
Convection barrier for improved insulation



Twin-cam multi-point security locking



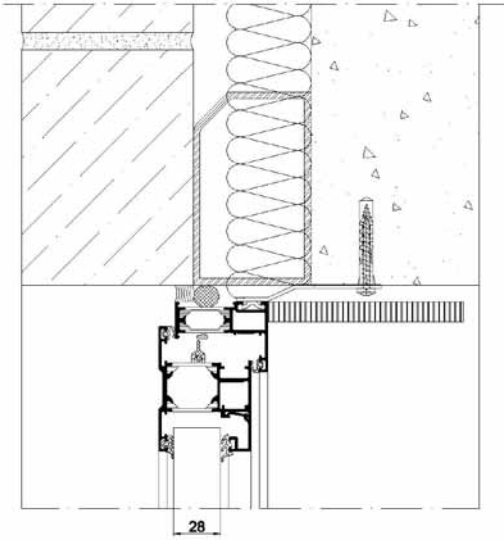
100mm auto-locking limit stay



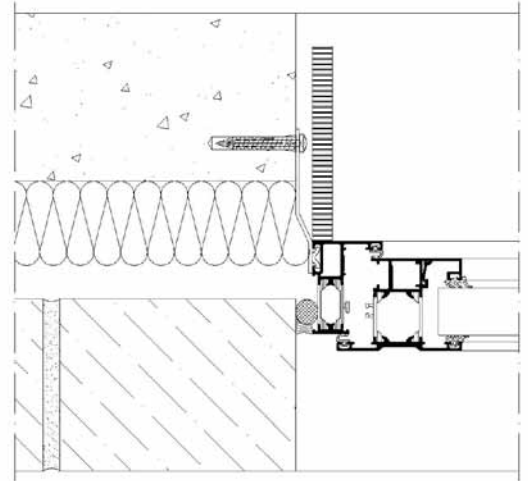
### Schueco AWS 55 CL

Designed for optimal thermal insulation

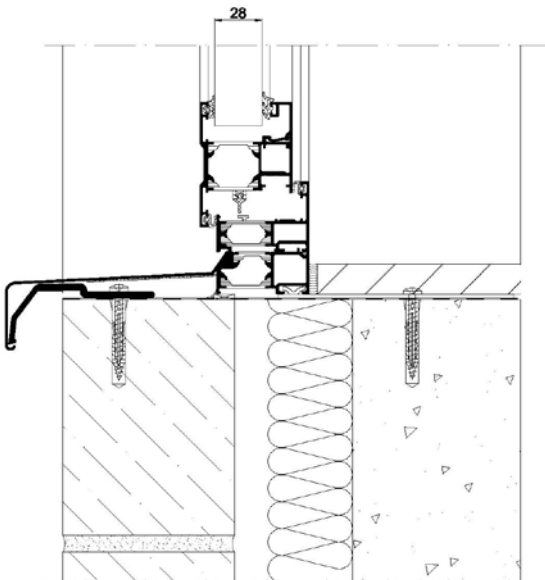
# Designed for economic thermal performance



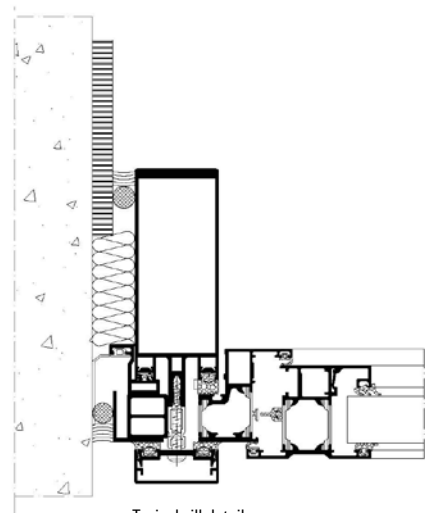
Typical head detail  
Scale: 1:3



Typical side detail  
Scale: 1:3



Façade with insert window  
Scale: 1:3



Typical sill detail  
Scale: 1:3

	Schueco AWS 55 CL	AWS 55 CL (Basic locking)	AWS 55 CL (Multi-point locking)
<b>Energy</b>			
Face width (mm)		81	89
Thermally insulated		■	■
Window U value with double glazed units - W/m <sup>2</sup> K*		1.6	1.6
<b>Design</b>			
<b>Basic depth</b>			
55 mm		■	■
Square glazing beads		■	■
Chamfered glazing beads		■	■
Internal glazing beads		■	■
External glazing beads with security option		■	■
Variable angle and 90° corners		■	■
Structural mullions and transoms		■	■
Dual colour option		■	■
<b>Fittings</b>			
Stainless steel friction hinges		■	■
Egress/easyclean friction hinges		■	■
Cockspur handle locking		■	
Twin-cam security locking			■
Folding openers		■	■
100mm opening limit stay with auto locking		■	■
<b>Areas of use</b>			
Standard openings		■	■
Storey height openings		■	■
Insert unit in façade		■	■
BREEAM projects		■	■
Green Guide commercial window generic rating "A" (element 831500023)		■	■
Green Guide domestic window generic rating "B" (element 813100001)		■	■
Compatible door system		■	■
<b>Opening types</b>			
Projected top hung		■	■
Projected side hung		■	■
Projected side hung egress/easyclean		■	■
<b>Maximum sizes (mm)</b>			
Projected top hung		1200 x 1200	1200 x 1200
Projected side hung		800 x 1450	800 x 1450
<b>Maximum weight (kg)</b>			
Projected top hung		50	50
Projected side hung		35	35
Projected side hung egress/easyclean		35	35
<b>Security</b>			
Burglary resistance - BS7950			■
Secured by Design accredited			■

\* Based on standard window from BS EN1435-1 as specified in Document L 2010 with selected profiles and glazing units. Calculations according to BS EN 10077 1 and 2 with  $\Psi$  of 0.04



Square internal glazing bead



Chamfered internal glazing bead



Chamfered external glazing bead

Schueco UK Ltd  
Whitehall Avenue  
Kingston  
Milton Keynes  
MK10 0AL

Tel: 01908 282111  
e-mail: [mkinfobox@schueco.com](mailto:mkinfobox@schueco.com)  
website: [www.schueco.co.uk](http://www.schueco.co.uk)

February 2011